



TH

WIMPERNWELT 2023

International Eyelash &
Eyebrow Championship

ONLINE EDITION

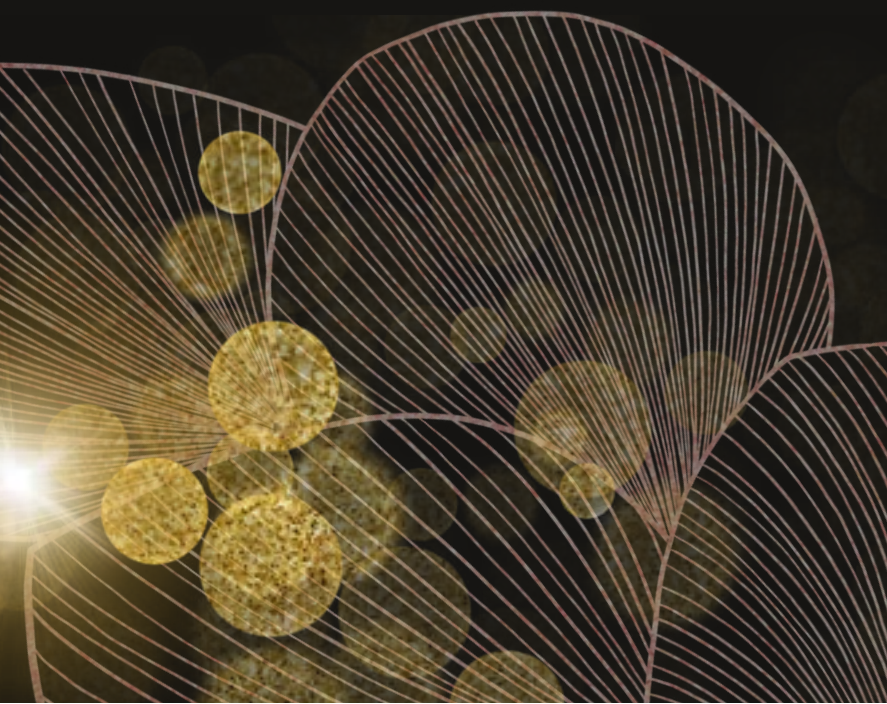


TABLE OF CONTENTS

Please note that this magazine will be updated. Therefore, make sure you always download the latest version.

Page 3	Who are we?
Page 4	How can you participate online?
Page 5	What categories are there?
Page 6	What battles are there?
Page 7	What levels are there?
Page 8	Prices for participation
Page 9	How can you become a lash queen?
Page 10	Our Lash Queens
Page 11	How can you become a Lamiqueen?
Page 12	How can you become a brow queen?
Page 13	Represent your Team
Page 14	General regulations for eyelash extensions
Page 15	General regulations for eyelash lifting
Page 16	General regulations for Browlifting & Browhenna
Page 17	Image requirements
Page 18	Required images for eyelash extensions
Page 21	Classic, 2D/3D and 4D-10D volume
Page 22	Criteria Classic 1:1 Online
Page 23	Criteria 2D/3D Volume Online
Page 24	Criteria 4D - 10D Maxx Volume Online
Page 25	Required images for eyelash lift
Page 28	
Page 29	Criteria for eyelash lift Online
Page 30	Required images for eyebrow lift
Page 32	
Page 33	Criteria for Eyebrow lifting online
Page 34	Required images for Browhenna
Page 35	
Page 36	Criteria for Brow Henna Online
Page 37	Impressions
Page 38	Contact



WHO ARE WE?

Hello! We are Glam Lashes - an eyelash company that has been committed to promoting and advancing the profession of lash stylists since day one. So it was a matter of course for us to give you the opportunity to prove yourself as an expert. That's why we've been organizing the largest and most popular eyelash championship in Germany every year since 2015, which you know as Wimpernwelt. Because it's all about the world of eyelashes.

The eyelash stylist industry should be promoted and challenged here. But the eyelash world is more than just a championship! It connects colleagues, creates new business relationships and gives people courage and, above all, confirmation that they have valuable work. We have also added an important event to the eyelash world with the Lashmeeting. The stylist's further training is encouraged here.

A conference with top lash stylists who share their knowledge with you. A whole day full of information with a pleasant atmosphere and good food. But that's not enough, after the learning phase we take a short break and then meet you in the evening as colleagues and friends for dinner. A rich buffet with culinary delights. Of course, we also hand out certificates and other surprises in the evening. A day that turns colleagues into friends.

Unfortunately, since 2020 we have not been able to organize the championship again in its original form live. We very much hope that it will be possible in 2024.

This year the Eyelash & Eyebrow Championship will only take place online.

Be a part of the Wimpernwelt and support our profession!

Eure Elizabeth Celik





How can you participate online?

You can also take part in the online championship this year. Participating online saves you time and money and is definitely less stressful. You can easily make a model in your studio without any time pressure and send the required pictures to us.

STEP 1

The most important thing is to register so that you have a permanent place. The current registration deadline is November 6th, 2023. But don't wait too long as we also have to plan.

Visit our homepage www.wimpernweltchampionship.com

Select the category you would like to register in under Registration and add it to the shopping cart. If you would like to take part in other categories, put them in your shopping cart too. Finally, you go to the checkout and choose the payment method and complete the order. You will also receive an automatic email with your order. If you don't receive an email, please contact us by email.

Email: wimpernwelt@glam-lashes.de

STEP 2

Now send us an email with the following information.

All certificates that are important for the categories in which you have registered. Also let us know if you are in the trainer category or have already won prizes.

Would you like to take part in the "TEAM BATTLE" as a team for free? Then please let us know.

Feel free to choose a team name too:-) Did you know that you can also take part in "Lashqueen", "Browqueen" and "Lamiqueen" for free if you book the appropriate categories?

STEP 3

Please read through all the important details for the online championship now so that you don't waste any points. Read through both the criteria and the image requirements. This way you know how many points are worth what and you can prepare well. Afterwards you send us the pictures by email, ideally as a link from e.g. Wetransfer.

If you have any questions, please feel free to contact us via email at any time.

Email: wimpernwelt@glam-lashes.de



CATEGORIES ONLINE PHOTO CONTEST

You can register for 6 different categories and get a trophy 1-3 in each category. Win place.

CLASSIC 1:1

2D-3D LIGHT VOLUMEN

4D-10D MAXX VOLUMEN

LASHLIFT

BROWLIFT

EYEBROW TINTING

with COLOR or HENNA

For the categories Classic / 2D-3D volume / 4D-10D volume and eyelash lifting you can also take part in REPRESENT YOUR TEAM for free with the same work and increase your chance of winning a trophy.

You can also take part in battles without paying anything extra, but you will then have to register for several categories.
LASHQUEEN BROWQUEEN LAMIQUEEN

BATTLES ONLINE

LASHQUEEN

CLASSIC 1:1

2D-3D LIGHT VOLUMEN

4D-10D MAXX VOLUMEN

LASHLIFT

If you register for all 4 eyelash categories, you will automatically take part in the LASHQUEEN Battle for free.

LAMIQUEEN

LASHLIFT

BROWLIFT

If you register for the 2 Lami categories, you will automatically take part in the LAMIQUEEN Battle for free.

BROWQUEEN

BROWLIFT

EYEBROW TINTING

with COLOR or HENNA

If you register for the 2 eyebrow categories, you will automatically take part in the BROWQUEEN Battle for free.

ATTENTION: If you want to take part in Lashqueen, Lamiqueen and Browqueen, you must purchase the categories Wimplifting and Eyebrowlifting for the battle. So twice



LEVELS

When enough participants have registered for a category, we divide the categories into levels. In order for a level in a category to even take place, there must be at least 5 participants in this level, otherwise it makes no sense. Each year the levels may be put together slightly differently as the industry continues to evolve.

After we have evaluated the registration up to today, the following levels have been created.

MASTER

MASTER is the lowest level. All beginners and those who have up to 3 years of experience in a category and are neither trainers nor have won anything will be assigned to Master.

PROFESSIONAL

PROFESSIONAL is the middle level. Everyone who has at least 3 years of experience in a category and is neither a trainer nor has won anything will be assigned to Professional.

EXPERT

EXPERT is the highest level. Everyone who is a trainer and has won something will be assigned to Expert.

Currently there are levels only in the eyelash categories

CLASSIC 1:1

2D-3D LIGHT VOLUMEN

4D-10D MAXX VOLUMEN

LASHLIFT

There are currently no levels in the eyebrow categories

BROW LIFT

EYEBROW TINTING

with COLOR or HENNA

We reserve the right to change the levels or create additional ones if further registrations show a different trend. Our goal is to create many but fair levels.

Online Championship Prize

Each category €99 including VAT.

What is included in the price?

- ✓ one medal per category - because you are already a winner for us.
- ✓ one certificate of participation per category - Your customers should see your courage.
- ✓ GoodieBag from sponsors - everyone is looking forward to it.
- ✓ Sending the evaluation forms by email - great feedback on your work to work on.
- ✓ Sending your certificates and winnings, everyone gets a package.
- ✓ Free participation in the TEAM Battle for the category in which you registered. To do this, enough teams must be formed for each category.
- ✓ Cup for 1st-3rd place if you win in the respective category
- ✓ Certificate for place 1-3 if you win in the respective category

What other free options do I have?

You can take part in the BROWQUEEN, LASHQUEEN and LAMIQUEEN battles for free. The condition is that you have already registered for the required category.

Note that categories such as: Eyelash lifting then has to be booked twice. 1x for Lashqueen and 1x for Lamiqueen.

The starting price also includes the certificates and trophies for the Queen Battles.

It's a great chance to win an important title and for free.

If you have any further questions, please feel free to contact us.

LASHQUEEN

**Would you like to become this year's Lash Queen 2023?
Every year we choose the lash queen of the tournament. How can you take part?
That's easy. Register in the following 4 online categories.**

**Classic 1.1 ONLINE
2D-3D Volume ONLINE
4D-10D Maxx Volume ONLINE
Lash lifting ONLINE**

It doesn't matter what level you are in each category. At the end, all your points from the 4 categories will be counted together and if you have the most points, then you will be Lash Queen 2023.

You think you're not ready for this? Then you're wrong, because none of the lash queens ever expected to win. It takes a lot of skill, but also a lot of luck. Because sometimes others have bad luck with a model and this could be your chance.

There are no additional costs for you to become a lash queen. All you have to do is register for the 4 required categories and pay. You have the chance to win in the category and then also the chance to become a lash queen. As soon as you have registered for the 4 categories, you will automatically be part of the Lash Queen Battle.

Do you also want to register as a Lamiqueen? Then of course you can. It is only important that you have a category of eyelash lifting to participate in the Lamiqueen Battle and Lashqueen Battle, so you MUST have 2 registrations and models for eyelash lifting and send us the photos labeled accordingly. You can call the folders Lashqueen Model Eyelash Lifting and Lamiqueen Model Eyelash Lifting. We have to be able to distinguish it precisely because it is important for scoring.

So there is a possibility that you can become a lashqueen and also a lamiqueen.

LASHQUEEN will always be the participant with the highest total number of points in the 4 required categories.

Take your chance and become Lash Queen 2023!

LASHQUEENS

 2017
ASHQUEEN



HANJALKA SZABO
LIVE

 2018
ASHQUEEN




ESESE TOTH
LIVE

 2019
ASHQUEEN




KIM VOGEL
LIVE

 2021
ASHQUEEN




MEYADA EKE
ONLINE

 2022
ASHQUEEN



KRISTINA RUHL
ONLINE

 2023
ASHQUEEN



XXXXXXXXXX
ONLINE

LAMIQUEEN

Would you like to become our first LAMIQUEEN this year?

This year we are choosing a Lamiqueen of the tournament for the first time. How can you take part? That's easy. Register in the following 2 categories.

Eyelash lift ONLINE Eyebrow lift ONLINE

It doesn't matter what level you are in each category. At the end, all your points from the 2 categories will be counted together and if you have the most points, then you will become Lamiqueen 2023.

**We are very excited about your interest and registrations. You dare!
Because lamination has become a very important part of the cosmetics industry.
Anyone who masters it perfectly will win many customers.**

By taking part in a championship you have the opportunity to show your potential customers what you can do and thereby win even more customers.

There are no additional costs to become a Lamiqueen. All you have to do is register for the 2 required categories and pay. You have the chance to win in the category and then also the chance to become Lamiqueen. As soon as you have registered for the 2 categories, you will automatically be included in the Battle of the Lamiqueen.

Do you also want to register as a LASHQUEEN or BROWQUEEN? Of course you can do that too. It is only important that you have a category of eyelash lifting to participate in the Lashqueen Battle and the Lamiqueen Battle. You MUST have 2 models for the eyelash lift and send us the photos labeled accordingly. You can call the folders Lashqueen Model Eyelash Lifting and Lamiqueen Model Eyelash Lifting. We have to be able to distinguish it precisely because it is important for scoring. The same applies to BROWQUEEN and LAMIQUEEN. The eyebrow lifting category must then be registered twice.

So there is a possibility that you can become a lashqueen, lamiqueen and browqueen.

If you have any further questions, please send us an email to wimpernwelt@glam-lashes.de

LAMIQUEEN will always be the participant with the highest overall score in the 2 required categories. Take your chance and become the Lamiqueen 2023!

BROWQUEEN

Would you like to be this year's and first BROWQUEEN?

This year we are choosing a brow queen of the tournament for the first time. How can you take part? That's easy. Register in the following 2 categories.

Brow HENNA (coloring with color or henna) ONLINE
Browlifting ONLINE

It doesn't matter what level you are in the respective category. At the end, all your points from the 2 categories will be counted together and if you have the most points, then you will become Brow Queen 2023.

We are very excited about your interest and registrations. You dare!
Eyebrows have become the frame of the face and an important part of the cosmetics industry. Anyone who masters it perfectly will win many customers.

By taking part in a championship you have the opportunity to show your potential customers what you can do and thereby win even more customers.

There are no additional costs to becoming a Browqueen. All you have to do is register for the 2 required categories and pay. You have the chance to win in the category and then also the chance to become a brow queen. As soon as you have registered for the 2 categories, you will automatically be part of the Brow Queen Battle.

Do you also want to register as LAMIQUEEN? Of course you can do that too. It is only important that you have an eyebrow lift category to participate in the Browqueen Battle and the Lamiqueen Battle. You MUST have 2 models for the eyebrow lift and send us the photos labeled accordingly. You can call the folders Lamiqueen Model Browlifting and Browqueen Model Browlifting. We have to be able to distinguish it precisely because it is important for scoring.

So there is a possibility that you can become a lamiqueen and a brow queen.

If you have any further questions, please send us an email to wimpernwelt@glam-lashes.de

BROWQUEEN will always be the participant with the highest overall score in the 2 required categories. Take your chance and become Brow Queen 2023!

REPRESENT YOUR TEAM

REPRESENT YOUR TEAM is also a great opportunity to win another one. You can take part for free if you have already registered for the following categories.

The following categories are planned for the competition.

Classic 1:1 ONLINE
Light Volume (2D/3D) ONLINE
Maxx Volume (4D-10D) ONLINE
Lashlifting ONLINE

First you have to register as normal for one or more categories. To take part in the team battle, you need 2 other colleagues who are also your partner for the same category. It can also be your colleagues in the studio or your social media friends. It doesn't matter what level your team partners are in the respective category. It is important that the 3 of you are registered in the same category and we can add up your points.

A new team can be formed in each of the 4 categories mentioned above with the same or different participants.

Example: You register with your 2 colleagues for the Classic 1:1 category. Your total score is then your team score for the Classic category.

You can then register in another category with the same team or with a different partner. If your team has the most points in the respective category, then your team is the winner of that category.

What do the winners of the team battle receive?

All teams in the 4 categories that lead the rankings in the respective category will each receive an additional certificate and a trophy. This gives you a great chance to win more trophies and certificates.

Participation as a team does not cost you anything extra, but must be confirmed by us.

TEAM Battles only take place when enough teams have formed in a category.



Form a team of 3 participants e.g. for a company and win the team battle!

GENERAL REGULATIONS FOR EYELASH EXTENSIONS

Which adhesives can be used?

During the online championship we cannot check which glue was used. This means that normal and UV adhesives are permitted. It can be glued with transparent and black glue.

Which eyelashes can be used?

It is allowed to be glued with brown and black eyelashes. Any quality of lashes (silk and mink) can also be used. Curl and length can be freely chosen.

Remember when it comes to championships, less is more.

Thickness for Classic: 0.07 - 0.15mm Thickness for 2D-3D volume 0.05 - 0.10mm Thickness for 3D-10D volume 0.02 - 0.07mm

NO ready-made compartments may be used for VOLUMEN!!!!

TIPS for CLASSIC 1:1 - NUDE LOOK

Choose a look that best suits your model. Make sure that your choice of length, thickness and curl fits harmoniously with the overall look. Both eyes must be glued symmetrically and in a straight lashline. The optimal uniform distance to the eyelid is 0.3-0.5 mm. The more natural eyelashes you apply, the fuller the eyelashes appear and the more points you get. When it comes to length, sometimes less is more. The extensions must not be too long. Inner and outer corners are very important, it is best to cover them completely.

TIPS for 2D-3D volume - Light Volume

A perfect subject not only affects the quality of the subject, but also on almost all assessment criteria. Therefore, make sure that you build all compartments the same in order to deliver a perfect result. Choose a look that best suits your model. Pay attention to the choice of length, thickness and curl. Both eyes must be glued symmetrically and in a straight lashline. The optimal uniform distance to the eyelid is 0.3-0.5 mm. The more natural eyelashes you apply, the fuller the eyelashes appear and the more points you get. When it comes to length, sometimes less is more. The extensions must not be too long. Inner and outer corners are very important, it is best to cover them completely. Decide whether you will glue 2D or 3D.

TIPS for 4D-10 Volume - Light Volume

In this category, the larger the compartment, the harder it is to build them all the same and make it fit the model. Glue all subjects in the same XD and preferably what you know very well. The larger your subjects are, the more points you will receive for them, but this may cost points elsewhere. Pay attention to the choice of length, thickness and curl. Both eyes must be glued symmetrically and in a straight lashline. The optimal uniform distance to the eyelid is 0.3-0.5 mm. The more natural eyelashes you apply, the fuller the eyelashes appear and the more points you get. When it comes to length, sometimes less is more. The extensions must not be too long. Inner and outer corners are very important, it is best to cover them completely.

GENERAL REGULATIONS FOR EYELASH LIFTING

Which products can be used?

All brands may be used for the championship.

Do I have to laminate after the lifting?

You don't have to laminate because it's not an evaluation criterion, but laminating has many advantages and can have a positive effect on other criteria.

Tips for eyelash lifting

The overall impression also counts when lifting. Therefore, work cleanly. Use clean pads that have not absorbed the paint. This also makes it easier to assess the separation of the eyelashes, because you can hardly see the eyelashes on brown pads. After the lifting, remove any glue and paint residue from your eyes and eyelashes.

Glue the eyelashes onto the silicone pads in an accurate, tight elegance, perfectly separated eyelash by eyelash. Success lies in this step. We need a picture of how you applied lotion 1, so make sure you apply the lotion very cleanly and accurately. The distance to the tips and the waterline also play an important role here.

Apply the color cleanly and evenly to the eyelashes so that you get an even result in the end. Don't mess around. You can work with all lotions and colors.

Use the right pad. In any case, you should not make the lifting too strong so that the eyelashes bump against the eyelids. If you would like to use care, you are very welcome to do so. Just be careful that oil often makes the eyelashes look sticky in pictures.

GENERAL REGULATIONS FOR BROWLIFTING AND BROW HENNA

Which products can be used?

All brands may be used for the championship.

Which colors can be used?

It can be colored with henna as well as with normal and hybrid colors.

Do I have to laminate after the lifting?

You don't have to laminate because it's not an evaluation criterion, but laminating has many advantages and can have a positive effect on other criteria.

Can I use camouflage?

No, you can't use camouflage and concealer because we want to see that your color is perfect!

Tips for brow lifting

Impress the jury with the result! Show how brow lifting can change the model!

Pay attention to symmetry when applying the paint and its uniformity. Choose colors that match the model. You can dye with all colors and shades that are permitted. Make sure that the color result is enhanced after the lifting, so pay attention to the exposure times. We only need a picture of how you applied Lotion 2. Apply the lotion 2 cleanly to the eyebrows. You are welcome to use foil, but please send us the picture before you put the foil on it. You are allowed to use all approved lifting products. If you would like to use care, you are very welcome to do so. Just be careful that oil often makes the brows look cakey in pictures.

If your model has a lot of eyebrows, please prepare the hair removal as no redness is desired at the championship. Of course, the brows should be styled perfectly and that includes plucking.

You can't use camouflage or concealer because we want to see that your color is perfect!

Pay close attention that no hair is lifted or fixed in a curly manner or even over-lifted.

Tips for Brow Henna

Eyebrows are the frame of a face, what will the jury feel when they see your model for the first time? Impress them with your results!

Apply the color precisely and sharply. You can draw and also use paste. Try to make the color edges razor sharp! The color of the skin and therefore its evenness are crucial. You can do ombre (gradients), but it can't be patchy!

You can take part in the championship with both henna and normal colors. You can or should also style and shape your eyebrows. Both waxing and plucking are permitted. Just be careful not to cause any redness.

Color evenly and symmetrically to suit the model. Work cleanly. The skin around it must not have any color spots.

Image requirements

We need the following images for your participation to be accepted. Very important! If an image is missing, some ratings may receive 0 points. We are not responsible for ensuring that all images are sent complete. We therefore recommend that you take a close look at your outbox to see which images have been sent. You are also welcome to contact us by email. We also ask ONLY you! to send the requested images. Because we will only pass on the number of required images to the jury anonymously, it may happen that an important image is missing. Make sure that you take a lot of time when taking photos and that the images are sharp. Because our jurors will zoom in on the images; they won't be able to evaluate what they don't see. The quality of the images is also crucial. Each image must be at least 1 MB in size. So set your phone and camera for large images. Choose your model carefully to increase your chances of winning.

You can register for the online championship at any time and send your pictures to us at your leisure until the closing date. You can also register for a category multiple times.

Editing your eyelashes is not allowed! This can lead to disqualification. You are only allowed to retouch the skin a little. But we don't recommend this either, as people often accidentally rub their eyelashes with a brush. Our jury is trained and recognizes this very well. NO LOGO or sign of brands or products may be on the images.

Please name your pictures with e.g. Classic 1, Classic 2, Classic 3 etc. so we know which images belong in which category. Or you can send each category individually. The current registration deadline and deadline for submitting images is October 28th, 2023, but it can still be postponed. Therefore, please always check our website for updates.

We recommend that you do not send the images as email attachments so that the quality is not affected. But rather as a link on Wetransfer, Dropbox, Google Drive etc. and sent by email. We posted how to do this on Instagram. You are welcome to contact us if you have any questions.

When you take the pictures, check yourself. Check whether the details can really be seen when you zoom in. If not, change your settings. Sometimes you have to hold the phone or camera a little differently.

It is also very important that your work has not already been presented publicly. The same work may not be used by other championships, especially if a jury member is the same. It's best to contact us beforehand.

For the eyelash extension categories, we also need lashmapping to determine which eyelashes were glued in length and thickness. You can write this on a piece of paper and take a photo of it or simply send it to the email as a text. Pay attention to the evaluation criteria and fulfill them so as not to give away any points.

**WE NEED THE FOLLOWING PICTURES FOR:
CLASSIC 1:1, 2D/3D VOLUME, MAXX VOLUME (6 IMAGES)**



picture 1

BEFORE picture as POTRAIT Model is looking straight into the camera.

It is best for the model to sit or stand. No extensions have been glued yet. Picture should be taken with the whole face.

Make sure that the focus is on the eyes and not on the nose, for example. The jury must be able to see the natural eyelashes clearly.

Focus means the sharpest point.

A picture lying down is unflattering.



picture 2

AFTER picture as a POTRAIT model is looking straight into the camera.

It is best for the model to sit or stand. The modeling is completely glued, so you can see the finished result in this picture. Picture should be taken with the whole face.

Here too, make sure that the focus is on the eyes and not on the nose, for example. The jury must be able to see the model clearly.

Focus means the sharpest point.

A picture lying down is unflattering.

The picture should be easy to compare with the before picture. This image is one of the most important images.

**WE NEED THE FOLLOWING PICTURES FOR:
CLASSIC 1:1, 2D/3D VOLUME, MAXX VOLUME (6 IMAGES)**

picture 3



AFTER picture INPROCESS BEFORE the pads are removed

Picture of both eyes with eye pads and tape - model is lying with her eyes closed and both eyes are photographed from above.

The tape can be stuck in different white colors. You can also use any tape. The aim should be to see the distance to the eyelid in the photo.

The eyebrows don't have to be completely in the picture.

Make sure the focus is on the eyelashes.



Do not send this picture!

This is just to show what the jury wants to see.

**The tape can be glued individually.
It has to serve its purpose.**

We then need the lash mapping and the length and thickness of the glued eyelashes. You can write this on a piece of paper and take a photo of it or simply send it in the email as a text. Pay attention to the evaluation criteria and fulfill them so as not to give away any points.

**WE NEED THE FOLLOWING PICTURES FOR:
CLASSIC 1:1, 2D/3D VOLUME, MAXX VOLUME (6 IMAGES)**

picture 4



AFTER picture AFTER the pads are removed

Model is lying with her eyes closed and both eyes are
photographed from above.

The eyebrows don't have to be completely in the picture.

Make sure the focus is on the eyelashes.

**WE NEED THE FOLLOWING PICTURES FOR:
CLASSIC 1:1, 2D/3D VOLUME, MAXX VOLUME (6 IMAGES)**



picture 5

AFTER picture close-up right eye

Model is looking straight, the photo should be taken slightly from below so that you can see the glued areas and the distance to the eyelid.

If the model is sitting, the customer will probably have to look up slightly to comply with the conditions.

Whether you take this picture sitting or lying down depends on the model and how the eyelashes grow.

Tip: It's best to take pictures of both variants and choose what you would like to send to us. Plays with the angle of the phone/camera.



picture 6

AFTER picture Close-up of the left eye

The customer is looking straight, the photo should be taken slightly from below so that you can see the glued areas and the distance to the eyelid.

If the customer is sitting, the customer will probably need to look up slightly to comply with the conditions.

Whether you take this picture sitting or lying down depends on the model and how the eyelashes grow.

Tip: It's best to take pictures of both variants and choose what you would like to send to us. Plays with the angle of the phone/camera.

The eyelashes and the distance to the eyelid edge must be clearly visible! We then need the lash mapping and the length and thickness of the glued eyelashes. You can write this on a piece of paper and photograph it or simply send it to the email as a text. Pay attention to the evaluation criteria and fulfill them so as not to give away any points.

CLASSIC 1:1 ONLINE

CRITERIA

Below you can see which criteria the jury has to use to evaluate. For each criterion there is a maximum number of points that a jury can award. You can see how complex the evaluation is when added together. With Classic, the more natural the better a nude look.

CRITERIA	MAX. POINTS
OVERALL PICTURE	10 points
MODELING	10 points
SYMMETRY	10 points
LASHLINE	10 points
DISTANCE TO THE LID	10 points
FULLNESS 100%	10 points
LENGTH SELECTION	10 points
THICKNESS/WEIGHT	10 points
INNER ANGLES	10 points
EXTERNAL ANGLES	10 points
IMAGE QUALITY	10 points
TOTAL POINTS	110 points

Please note, however, that the jury can also deduct points if the work was done improperly.

Red eyes and skin, stripping off the adhesive on the pads, etc. are also not desired.

Editing eyelashes and eyebrows will result in disqualification!

The use of ready-made compartments is NOT permitted!

2D/3D VOLUMEN ONLINE

CRITERIA

Below you can see which criteria the jury has to use to evaluate. For each criterion there is a maximum number of points that a jury can award. You can see how complex the evaluation is when added together.

For 2D-3D volumes it is important to glue a light volume - Light Volume.

Choose between 2D OR 3D

CRITERIA	MAX. POINTS
OVERALL PICTURE	10 points
MODELING	10 points
SYMMETRY	10 points
LASHLINE	10 points
DISTANCE TO THE LID	10 points
FULLNESS 100%	10 points
LENGTH SELECTION	10 points
THICKNESS/WEIGHT	10 points
INNER ANGLES	10 points
EXTERNAL ANGLES	10 points
ALIGNMENT	10 points
FLUIDITY/QUALITY	10 points
IMAGE QUALITY	10 points
TOTAL POINTS	130 points

Please note, however, that the jury can also deduct points if the work was done improperly.

Red eyes and skin, stripping off the adhesive on the pads, etc. are also not desired.

Editing eyelashes and eyebrows will result in disqualification!

The use of ready-made compartments is NOT permitted!

4D-10D MAXX VOLUMEN ONLINE

CRITERIA

Below you can see which criteria the jury has to use to evaluate. For each criterion there is a maximum number of points that a jury can award. You can see how complex the evaluation is when added together. With 4D-10D Maxx volume it is important to glue a strong volume, but be careful to match the model. Choose 4D or 5D or 6D or 7D or 8D or 9D or 10D. It must not be mixed.

CRITERIA	MAX. POINTS
OVERALL PICTURE	10 points
MODELING	10 points
SYMMETRY	10 points
LASHLINE	10 points
DISTANCE TO THE LID	10 points
FULLNESS 100%	10 points
LENGTH SELECTION	10 points
THICKNESS/WEIGHT	10 points
INNER ANGLES	10 points
EXTERNAL ANGLES	10 points
ALIGNMENT	10 points
FLUIDITY/QUALITY	10 points
4D-5D/6D-7D/8D-10D	6/8/10 points
IMAGE QUALITY	10 points
TOTAL POINTS	140 points

Please note, however, that the jury can also deduct points if the work was done improperly. Red eyes and skin, stripping off the adhesive on the pads, etc. are also not desired. Editing eyelashes and eyebrows will result in disqualification! The use of ready-made compartments is NOT permitted!

WE NEED THE FOLLOWING PICTURES FOR

LASHLIFT (9 PICTURES)



picture1

BEFORE picture as POTRAIT Model is looking straight into the camera

It is best for the model to sit or stand. The eyelashes are free of mascara and have not yet been lifted.

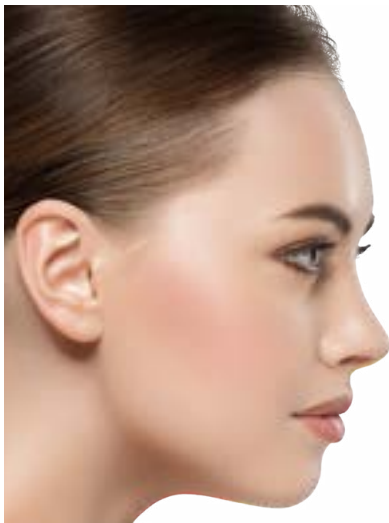
Picture should be taken with the whole face.

Make sure the focus is on the eyes and not on e.g.

Nose. The jury must be able to see the natural eyelashes clearly.

Focus means the sharpest point.

A picture lying down is unflattering.



picture 2

BEFORE image as POTRAIT SIDE PERSPECTIVE

Model is currently looking to the side e.g. on a wall

It is best for the model to sit or stand. The eyelashes are free of mascara and have not yet been lifted. The picture should then be taken from the side and show us the natural curl of the eyelashes.

Make sure the focus is on the eyes and not on e.g.

Nose. The jury must be able to see the natural eyelashes clearly.

Focus means the sharpest point.

A picture lying down is unflattering.

Image requirements

LASHLIFT (9 PICTURES)

picture 3

INPROCESS /SILICONE PADS ARE GLUED

The silicone pads are glued. **BOTH EYES!**

The picture is intended to show that the silicone pads were glued without air pockets and close enough to the eyelash edge and whether the correct pad was used. Therefore, choose the angle of the picture so that you can see that. A picture from above is therefore unfavorable.

Make sure that the focus is on the eyes and not on the nose, for example. The jury must be able to clearly see the base of the pads/lashes.



picture 4

INPROCESS / EYELASHES ARE STICKED UP

Glue the eyelashes neatly from the roots onto the silicone pads. BOTH EYES!

The picture is intended to show that the silicone pads continue to fit well, whether the eyelashes are all perfectly separated and whether the eyelashes have been tightened correctly. Therefore, choose the angle of the picture so that you can see that. A picture from above is therefore unfavorable.

Make sure that the focus is on the eyes and not on the nose, for example. The jury must be able to see the natural eyelashes clearly.



picture 5

INPROCESS / EYELASHES WITH LOTION

Apply the lotion neatly and perfectly positioned. BOTH EYES!

The picture should show that you have applied the right amount of lotion, the lotion neatly and have chosen the right height of the lotion from the roots and tips. Therefore, choose the angle of the picture so that you can see that. A picture from above is therefore unfavorable.

Make sure that the focus is on the eyes and not on the nose, for example.



Image requirements

LASHLIFT (9 PICTURES/)



picture 6

AFTER picture as a POTRAIT model is looking straight into the camera

It is best for the model to sit or stand.

You can see the finished lifting result in this picture.

Picture should be taken with the whole face.

Here too, make sure that the focus is on the eyes and not on the nose, for example. The jury must be able to clearly see the lifting result.

Focus means the sharpest point.

A picture lying down is unflattering.

The picture should be easy to compare with the before picture. This image is one of the most important images.



picture 7

AFTER picture as a POTRAIT SIDE PERSPECTIVE Model is looking straight to the side, for example at a wall.

It is best for the model to sit or stand.

You can see the finished lifting result in this picture.

The picture should then be taken from the side and show us the curve of the lifted eyelashes.

Make sure that the focus is on the eyes and not on the nose, for example. The jury must be able to see the natural eyelashes clearly.

Focus means the sharpest point.

A picture lying down is unflattering.

Image requirements

LASHLIFT (9 PICTURES/)



picture 8

AFTER picture close-up right eye.

Model is looking straight into the camera.

This picture is best taken while sitting or standing. Here it is very important to see the entire eyes and especially the eyelashes very clearly. Here the color of the eyelashes and whether they may have been over-lifted are assessed, as well as the lifting in general.

The cleanliness of the skin and paint residues are also analyzed.



picture 9

AFTER picture close-up left eye.

Model is looking straight into the camera.

This picture is best taken while sitting or standing. Here it is very important to see the entire eyes and especially the eyelashes very clearly. Here the color of the eyelashes and whether they may have been over-lifted are assessed, as well as the lifting in general.

The cleanliness of the skin and paint residues are also analyzed.

LASHLIFT ONLINE

CRITERIA

Below you can see which criteria the jury has to use to evaluate. For each criterion there is a maximum number of points that a jury can award. You can see how complex the evaluation is when added together. With eyelash lifting online, a beautiful and even curl is important. Be careful, but it fits the model.

CRITERIA	MAX. POINTS
OVERALL PICTURE	10 points
SET SILICONE PADS	10 points
STICK UP 1	10 points
STICK UP 2	10 points
APPLY LOTION 1	10 points
MOMENTUM	10 points
SYMMETRY	10 points
INNER ANGLES	10 points
EXTERNAL ANGLES	10 points
COLOR RESULT	10 points
CLEANLINESS	10 points
EYELASH QUALITY	10 points
IMAGE QUALITY	10 points
TOTAL POINTS	130 points

Please note, however, that the jury can also deduct points if the work was done improperly. Red eyes and skin are also not desired. Editing eyelashes and eyebrows will result in disqualification!

WE NEED THE FOLLOWING PICTURES FOR BROWLIFT (8 PICTURES)



picture 1

BEFORE picture as POTRAIT Model is looking straight into the camera

It is best for the model to sit or stand. The eyebrows are free of powder and make-up and neither lifted nor colored. Picture should be taken with the whole face.

Make sure that the focus is on the eyebrows and not on the nose, for example. The jury must be able to see the eyebrows clearly.

Focus means the sharpest point.

A picture lying down is unflattering.



picture 2

BEFORE picture of right eye with eyebrow

It is best for the model to sit or stand. The eyebrows are free of powder and make-up and neither lifted nor colored. Here we need to see the condition of the eyebrows well.

Make sure that the focus is on the eyebrows and not on, for example, eyelashes. The jury must be able to see the eyebrows clearly.

Focus means the sharpest point.

A picture lying down is unflattering.



picture 3

BEFORE picture left eye with eyebrow

It is best for the model to sit or stand. The eyebrows are free of powder and make-up and neither lifted nor colored. Here we need to see the condition of the eyebrows well.

Make sure that the focus is on the eyebrows and not on, for example, eyelashes. The jury must be able to see the eyebrows clearly.

Focus means the sharpest point.

A picture lying down is unflattering.

Image requirements

BROWLIFT (8 PICTURES)

picture 4

Image INPROZESS Lotion 2 (without foil)

The model is sitting, standing or lying down. It is important that you see how the lotion 2 was applied to both eyebrows. Please don't put the lotion on it like in the picture, but do it neatly. Because it is evaluated how you applied the lotion.



picture 5

Image INPROCESS Color is applied

The model is sitting, stands or lies. It is important that you can see how the color was applied to both eyebrows. Please apply the color properly, as that is exactly what is being evaluated. So not like in our example image.



picture 6

AFTER picture as a POTRAIT model is looking straight into the camera

It is best for the model to sit or stand. You can see the finished browlifting result in this picture. Picture should be taken with the whole face.

Here too, make sure that the focus is on the eyebrows and not on the nose, for example. The jury must be able to see the eyebrows clearly.

Focus means the sharpest point.

A picture lying down is unflattering.

The picture should be easy to compare with the before picture. This image is one of the most important images.



Image requirements

BROWLIFT (8 PICTURES)

picture 7

AFTER picture of right eye with eyebrow

It is best for the model to sit or stand. The eyebrows are lifted and colored. Here we need to see the condition of the eyebrows well.

Make sure that the focus is on the eyebrows and not on, for example, eyelashes. The jury must be able to see the eyebrows clearly.

Focus means the sharpest point.

A picture lying down is unflattering.



picture 8

AFTER PICTURE left eye with eyebrow

It is best for the model to sit or stand. The eyebrows are lifted and colored. Here we need to see the condition of the eyebrows well.

Make sure that the focus is on the eyebrows and not on, for example, eyelashes. The jury must be able to see the eyebrows clearly.

Focus means the sharpest point.

A picture lying down is unflattering.



BROWLIFT ONLINE

CRITERIA

Below you can see which criteria the jury has to use to evaluate. For each criterion there is a maximum number of points that a jury can award. You can see how complex the evaluation is when added together.

Eye brow lifting online means beautifully colored and lifted eyebrows.

Be careful, but it fits the model.

CRITERIA	MAX. POINTS
OVERALL PICTURE	10 points
APPLY LOTION 2	10 points
APPLYING THE COLOR	10 points
ALIGNMENT	10 points
MODELING/SHAPE	10 points
CLEANLINESS	10 points
COLOR RESULT COLOR CHOICE	10 points
SYMMETRY	10 points
HAIR QUALITY/ NO OVERLIFTING	10 points
IMAGE QUALITY	10 points
TOTAL POINTS	100 points

WE NEED THE FOLLOWING PICTURES FOR

BROW HENNA (6 PICTURES)



picture 1

BEFORE picture as POTRAIT Model is looking straight into the camera

It is best for the model to sit or stand. The eyebrows are free of powder and make-up and neither lifted nor colored. Picture should be taken with the whole face.

Make sure that the focus is on the eyebrows and not on the nose, for example. The jury must be able to see the eyebrows clearly.

Focus means the sharpest point.

A picture lying down is unflattering.



picture 2

Image INPROCESS Color is applied

The model is sitting, stands or lies. It is important that you can see how the color was applied to both eyebrows. Please apply the color properly, as that is exactly what is being evaluated. So not like in our example image.

Browpaste can also be used and drawn.



picture 3

Image INPROCESS Color is applied 1 eyebrow

The model sits, stands or lies. What is important is that you can see how the color is razor sharp. Please apply the color properly, as that is exactly what is being evaluated. So not like in our example image.

Browpaste can also be used and drawn.

Image requirements

HENNA EYEBROWS (6 PICTURES)

picture 4



AFTER picture as a POTRAIT model is looking straight into the camera

It is best for the model to sit or stand. You can see the finished brow result in this picture. Picture should be taken with the whole face.

Here too, make sure that the focus is on the eyebrows and not on the nose, for example. The jury must be able to see the eyebrows clearly.

Focus means the sharpest point.

A picture lying down is unflattering.

The picture should be easy to compare with the before picture. This image is one of the most important images.

picture 5



AFTER picture of right eye with eyebrow

It is best for the model to sit or stand. The eyebrows are colored. Here we need to clearly see the condition and coloring of the eyebrows.

Make sure that the focus is on the eyebrows and not on, for example, eyelashes. The jury must be able to see the eyebrows clearly.

Focus means the sharpest point.

A picture lying down is unflattering.

picture 6



AFTER PICTURE left eye with eyebrow

It is best for the model to sit or stand. The eyebrows are colored. Here we need to clearly see the condition and coloring of the eyebrows.

Make sure that the focus is on the eyebrows and not on, for example, eyelashes. The jury must be able to see the eyebrows clearly.

Focus means the sharpest point.

A picture lying down is unflattering.

BROW HENNA ONLINE

CRITERIA

Below you can see which criteria the jury has to use to evaluate. For each criterion there is a maximum number of points that a jury can award. You can see how complex the evaluation is when added together.

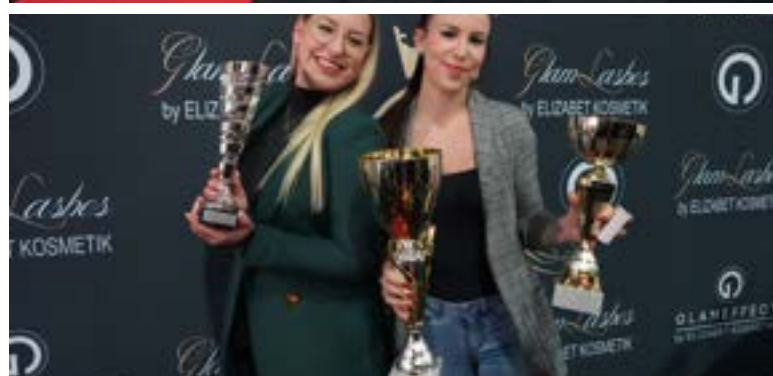
With Brow Henna Online, beautifully colored eyebrows are what counts.

Be careful, but it fits the model.

NORMAL EYEBROW COLORS CAN ALSO BE USED.

CRITERIA	MAX. POINTS
OVERALL PICTURE	10 points
APPLYING THE COLOR	10 points
MODELING/SHAPE	10 points
BROW THICKNESS	10 points
BROW LENGTH	10 points
COLOR CHOICE	10 points
OVERALL COLORING	10 points
SYMMETRY	10 points
CLEANLINESS	10 points
IMAGE QUALITY	10 points
TOTAL POINTS	100 points

Some impressions of the live event



follow us on Social media



**The organizer is Elizabet Kosmetik -
Glam Lashes Email:
wimpernwelt@glam-lashes.de**

This brochure is updated regularly, so we ask you to download the current version before the championship. Subject to change. All statements without guarantee.



[wimpernwelt.gl](https://www.wimpernwelt.gl)



[wimpernwelt](https://www.wimpernwelt.com)



www.wimpernweltmeisterschaft.com